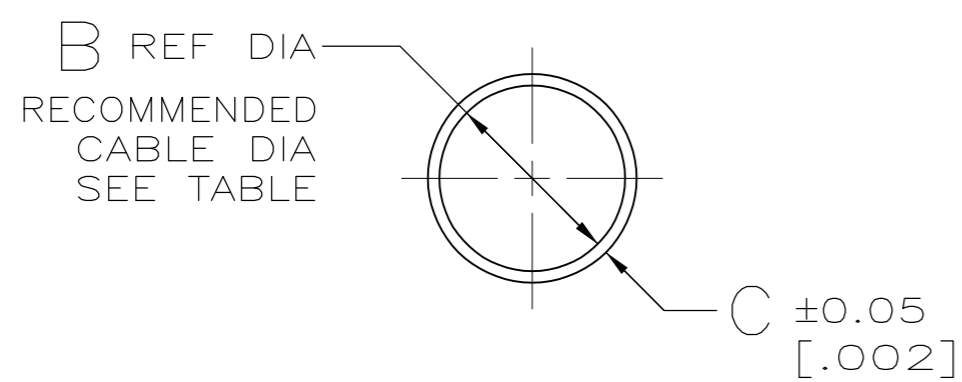
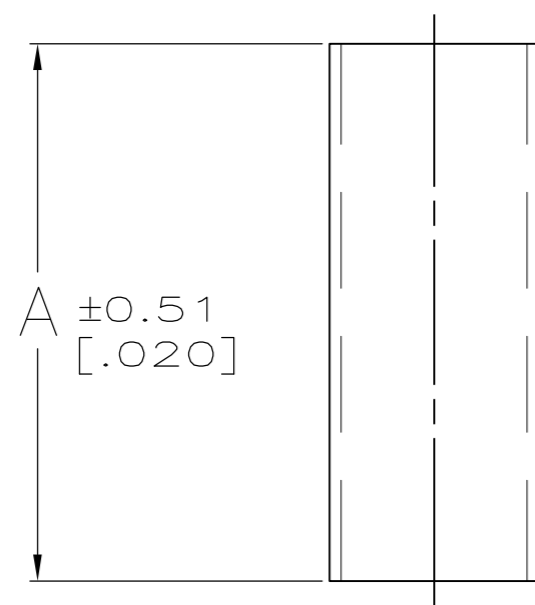


THIS DRAWING IS UNPUBLISHED. RELEASED FOR PUBLICATION  
 © COPYRIGHT - By - ALL RIGHTS RESERVED.

LOC		DIST		REVISIONS					
GP		00		P	LTR	DESCRIPTION	DATE	DWN	APVD
				F5		REVISED PER ECO-11-004835	11MAR11	RK	HMR

- △1 .000100 MIN TIN PER MIL-T-10727 OR TIN-LEAD.
- △2 .000100 MIN TIN PER MIL-T-10727.
- △3 COPPER PER QQ-C-576
- △4 SUPERSEDED
- △5 OBSOLETE PARTS: OBSOLETE CIS STREAMLINING PER D.RENAUD/D.SINISI



↑ △2 ↓	-	4.83-6.10 [.190-.240]	0.38 [.015]	6.15 [.242]	10.16 [.400]	△5	<del>5-745130-5</del>
	7-745129-8 7-745129-9	5.84-7.11 [.230-.280]	0.38 [.015]	7.16 [.282]	17.78 [.700]		4-745130-5
	-	17.78-19.05 [.700-.750]	0.51 [.020]	19.30 [.760]	17.78 [.700]		4-745130-4
	-	14.99-16.51 [.590-.650]	0.51 [.020]	16.76 [.660]	17.78 [.700]		4-745130-3
	7-745129-4 7-745129-6	11.81-13.46 [.465-.530]	0.51 [.020]	13.59 [.535]	17.78 [.700]		4-745130-2
	7-745129-1 7-745129-5	9.65-10.92 [.380-.430]	0.38 [.015]	11.10 [.437]	17.78 [.700]		4-745130-1
	6-745129-9	8.00-9.27 [.315-.365]	0.38 [.015]	9.52 [.375]	17.78 [.700]		4-745130-0
	7-745129-2	7.62-8.89 [.300-.350]	0.38 [.015]	8.99 [.354]	17.78 [.700]		3-745130-9
	7-745129-0 7-745129-3	4.83-6.10 [.190-.240]	0.38 [.015]	6.15 [.242]	17.78 [.700]		3-745130-8
↑ △1 ↓	-	4.83-6.10 [.190-.240]	0.38 [.015]	6.15 [.242]	10.16 [.400]	△4	3-745130-7
	3-745129-2 3-745129-4	5.84-7.11 [.230-.280]	0.38 [.015]	7.16 [.282]	17.78 [.700]	△4	1-745130-6
	-	17.78-19.05 [.700-.750]	0.51 [.020]	19.30 [.760]	17.78 [.700]	△4	1-745130-4
	-	14.99-16.51 [.590-.650]	0.51 [.020]	16.76 [.660]	17.78 [.700]	△4	1-745130-3
	2-745129-2 2-745129-6	11.81-13.46 [.465-.530]	0.51 [.020]	13.59 [.535]	17.78 [.700]	△4	1-745130-2
	1-745129-9 2-745129-3	9.65-10.92 [.380-.430]	0.38 [.015]	11.10 [.437]	17.78 [.700]	△4	1-745130-1
	1-745129-7	8.00-9.27 [.315-.365]	0.38 [.015]	9.52 [.375]	17.78 [.700]	△4	1-745130-0
	2-745129-0	7.62-8.89 [.300-.350]	0.38 [.015]	8.99 [.354]	17.78 [.700]	△4	745130-9
	1-745129-8 2-745129-1	4.83-6.10 [.190-.240]	0.38 [.015]	6.15 [.242]	17.78 [.700]	△4	745130-8
FINISH	USED WITH	RECOMMENDED CABLE DIA	C	B	A	PART NUMBER	

THIS DRAWING IS A CONTROLLED DOCUMENT.

DWN B. MCMASTER 21MAY04  
 CHK C. ROHDE 21MAY04  
 APVD M. WALMSLEY 21MAY04

TE Connectivity

FERRULE, OUTER,  
AMPLIMITE HDP-20

SIZE A2 CAGE CODE 00779 DRAWING NO C-745130 RESTRICTED TO -

SCALE 4:1 SHEET 1 OF 1 REV F5

CUSTOMER DRAWING